

The University of Tokyo Study Abroad/Student Exchange Program Report Form (for programs from a week to 3 months)

/Date

/Program

/Program info. <https://www.u-tokyo.ac.jp/adm/go-global/ja/program-list-short-AUA-IITB-I2E.html>

/Host university

/Program period

/Faculty/Graduate School at UTokyo

/Year at the time of Study Abroad

/Reason for choosing this period to participate

/How and why did you decide to participate?

/Overview

/Activities you took part in other than study/research

/Details of the activities you chose, or the reason why you did not take part in any activity other than study/research

/How did you spend your weekends?

/Facilities

/Support for students

/Type of accommodation

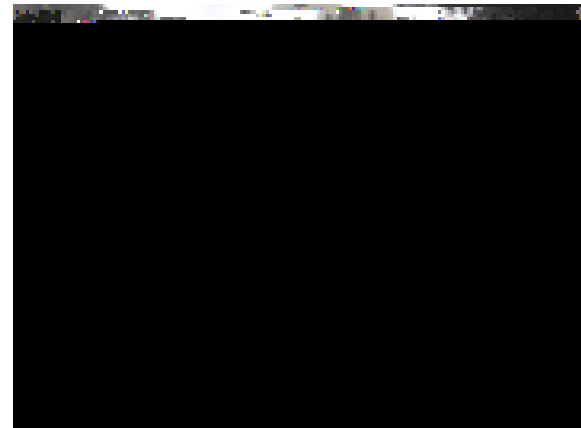
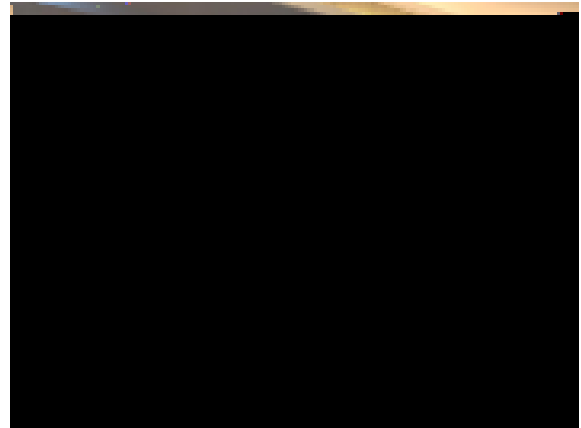
--

/Expenses of participation	
	/JPY
/Payment to host institution (tuition, facilities fee, etc.)	/JPY
/Textbook / Book	/JPY
/Overseas travel insurance fee (designated by UTokyo)	/JPY
/Insurance and/or social security (required by host institution/region/country)	/JPY
/Additional comments	

/Overall expenses spent during the program	
	/JPY
	/JPY
	/JPY
	/JPY
/Additional comments	

/Scholarships to participate	
/Name of the source of the scholarships	
io?? €D !Ó ?	
/Monthly stipend	
/Additional comments about the monthly stipend	
/How did you find the scholarships?	

/Impact of the participation on yourself or your thoughts



The University of Tokyo Study Abroad/Student Exchange Program Report Form (for programs from a week to 3 months)

/Date

/Type of accommodation	
/Environment around the accommodation and how did you find it	

/Climate, environment around the institution, transportation, food, etc.	
/Management of money and situation about local economy	
/Aspects of risk and safety management, local health care system, and any actions taken to maintain your health	
/Means of transportation in your free time	
/Internet service usage during the program	

/About preparations and procedures before participation	
/Procedures for participation	
/Procedures to obtain visas	
/Preparations or actions taken to maintain your health	
/Preparations/procedures for insurance	
/Procedures required by faculties or graduate schools at UTokyo	
/Language preparation	

/About expenses and scholarships to participate in studying abroad	
/Expenses of participation	
	/JPY
/Payment to host institution (tuition, facilities fee, etc.)	/JPY
/Textbook / Book	/JPY

/Overseas travel insurance fee (designated by UTokyo)	/JPY
/Insurance and/or social security (required by host institution/region/country)	/JPY
/Additional comments	

/Overall expenses spent during the program	
	/JPY
	/JPY
	/JPY
	/JPY
/Additional comments	

/Scholarships to participate	
/Name of the source of the scholarships	
/Monthly stipend	
/Additional comments about the monthly stipend	
/How did you find the scholarships?	

/Reflection	
/Impact of the participation on yourself or your thoughts	
/Impact of the program on your thoughts for a career or job hunting	
/Career/Occupation (planned)	
/Any messages or advice for future participants	

/Websds, n\$6 GEGE