

ONLINE EVENT

# Discover GraSPP

for aspiring public policy professionals

**Saturday, October 30, 2021**

**4:30pm to 6:00pm (IST/KST)**

3:30pm-5:00pm (Beijing, Kuala Lumpur, Manila, Singapore, Saitama)

2:30pm-4:00pm (Bangkok, Hanoi, Jakarta, Phnom Penh, Vientiane) 2:00pm-3:30pm (Yangon)

**Host: The University of Tokyo's Graduate School of Public Policy (GraSPP)**

**Co-host: GraSPP alumni & student volunteers**

# ~~PROGRAM~~

Introduction by Ms. Nobue Nachi

~~Program overview—MPP/IP by Prof. Toshiro Nishizawa~~

Faculty talk by Prof. Naomi Aoki

“

~~Alumni and student testimonials moderated by Ms. Pema Selden~~

~~General guidance on application by Ms. Sachiko Suzuki~~



## Faculty talk “



Professor Naomi Aoki (PhD, Public Administration) is an academic specializing in public administration and management. She is currently an associate professor in the Graduate School of Public Policy (GraSPP) at the University of Tokyo, Japan (since April 2020), and was formerly an assistant professor at the National University of Singapore (NUS) (August 2011- March 2020).

# Testimonials

## Alumni

## Students



Kamal Bahadur Basnet



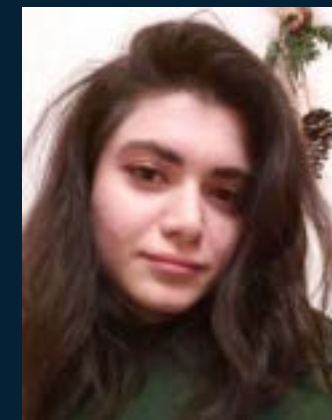
Eman Adhi Patra



Febtina Setia Retnani



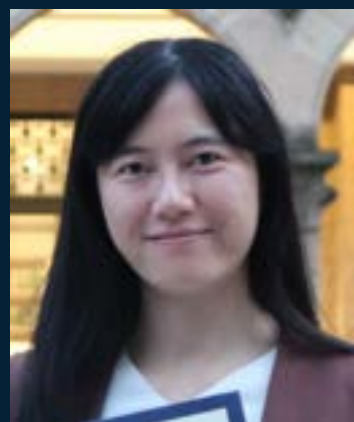
Oy Dheeranantakul



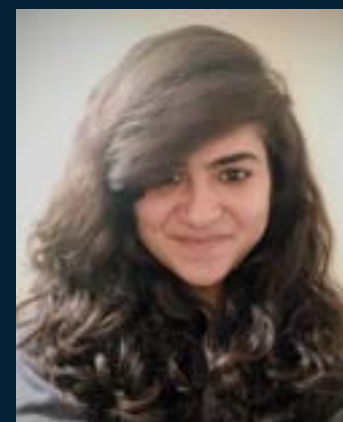
Tiko K. Khulordeva



Joaquin Sanchez



Chengliang Zhao



Sanjana Manaktala



Pema Selden

The University of Tokyo's Graduate School of Public Policy (GraSPP) will be holding a live online session via Zoom for prospective applicants to the Master of Public Policy, International Program (MPP/IP). Our faculty members will give an overview of MPP/IP and an example of the study, and the alumni and students will share their experiences at GraSPP.

The two-year MPP/IP offers an extensive and diverse menu of courses taught in English. The program provides recent graduates and aspiring public policy professionals with an opportunity to learn cutting-edge multidisciplinary approaches to addressing public policy challenges. Our faculty consists of academics who provide intellectual foundations, and policy practitioners who share their professional knowledge and experience with students. The diverse, international student body is close knit and provides alumni with a global network of public policy professionals. Our cosmopolitan campus is located in central Tokyo with government, business, and cultural districts within easy reach.

