

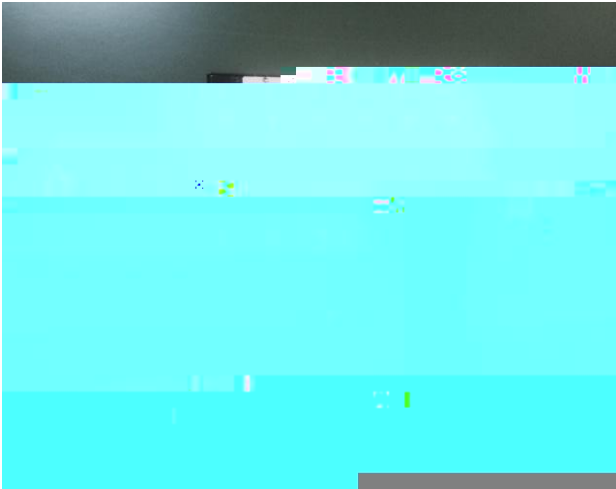


Capacitance sensors and piezo drive technology are used in space development.

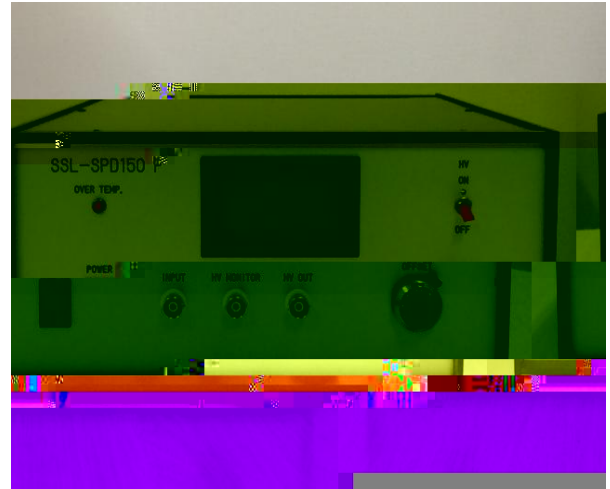
[Company history]

November 27, 2000 Shoei System Co., Ltd. was established. 3 employees. 3-44-15  
Ontacho, Higashimurayama-city

□



Multi-channel electrostatic sensor amplifier



Piezo pulser driver

[Products for sale]

Capacitance sensor\_probe type, 2-electrode type)

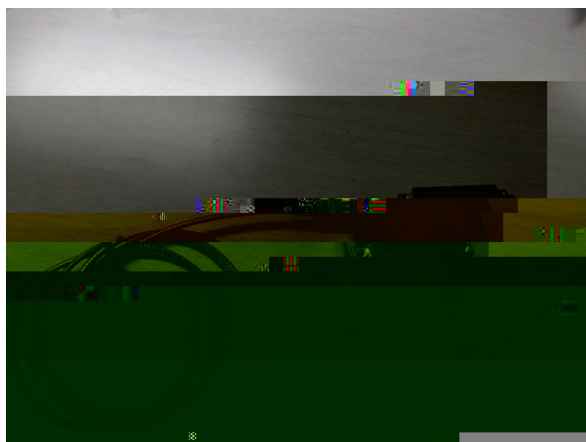
Piezo driver\_Linear output type, Pulser drive type

Servo unit\_digital PID control, analog PI control\_\_displacement control, load control, speed control, acceleration control.

Long stroke piezo stage and various types of piezo actuators

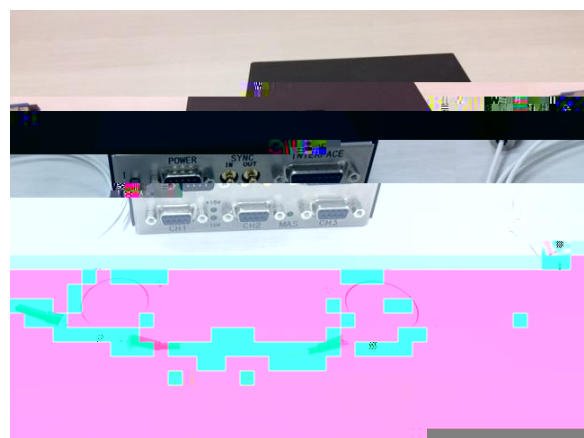
Special order piezo servo system

Standard single probe electrostatic sensor



Block-type electrostatic sensor

Flange capacitive sensor



2-electrode capacitive sensor

Small 250 m stroke\_Z stage